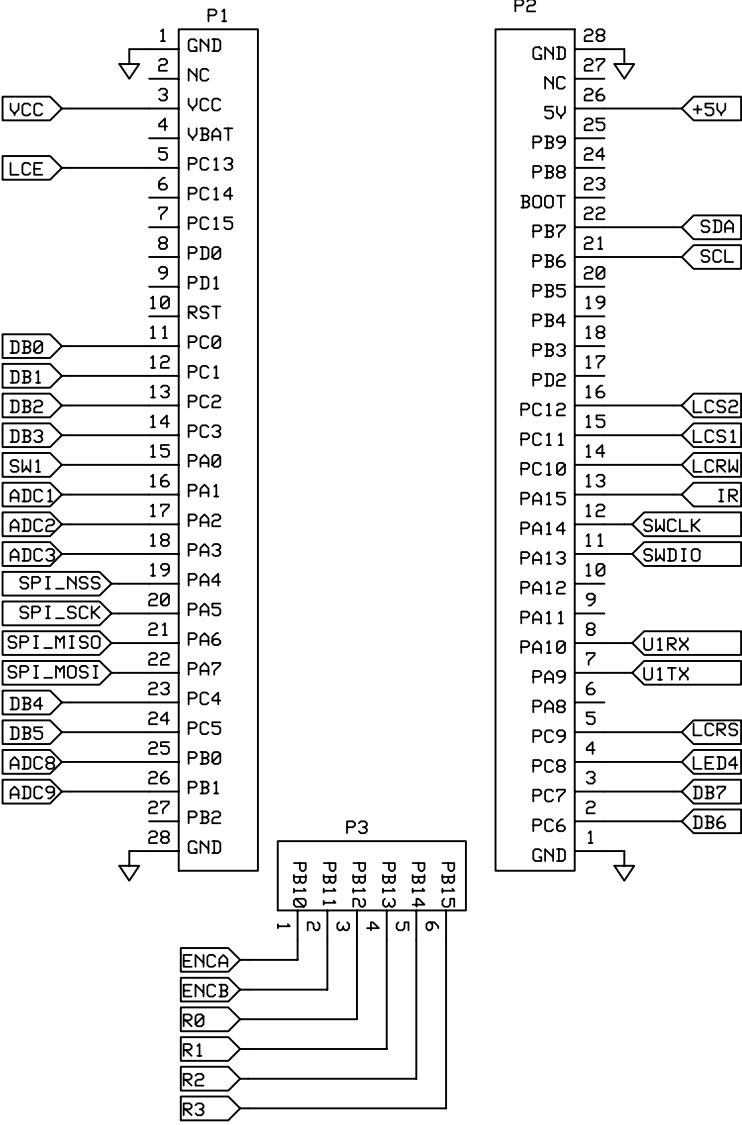
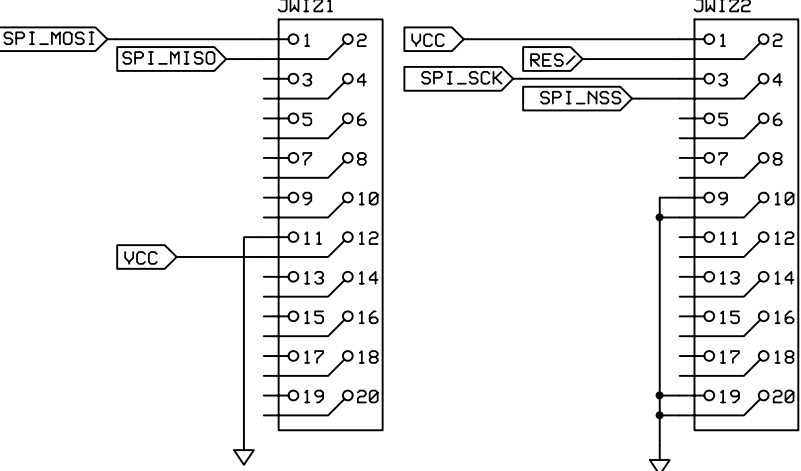


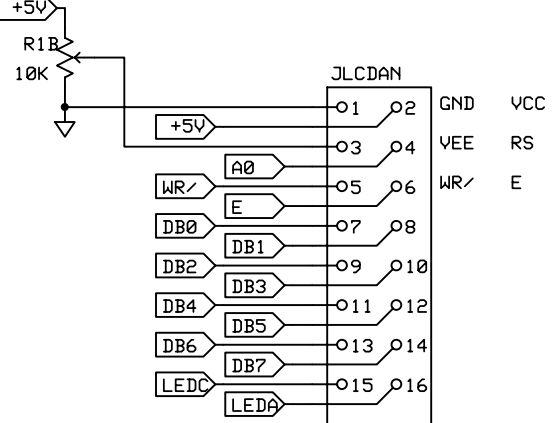
STM32F100RB Discovery Module



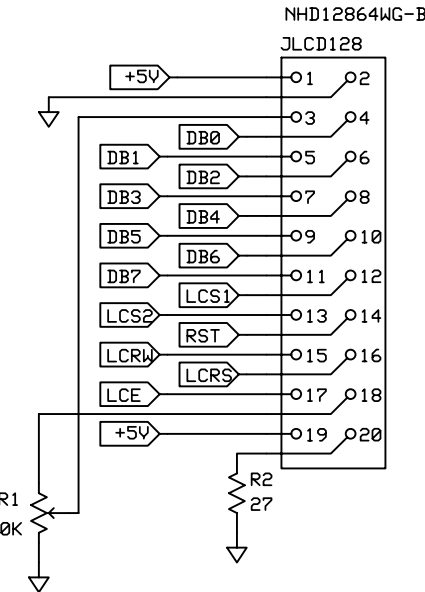
Wiznet WIZ811 Ethernet module via SPI



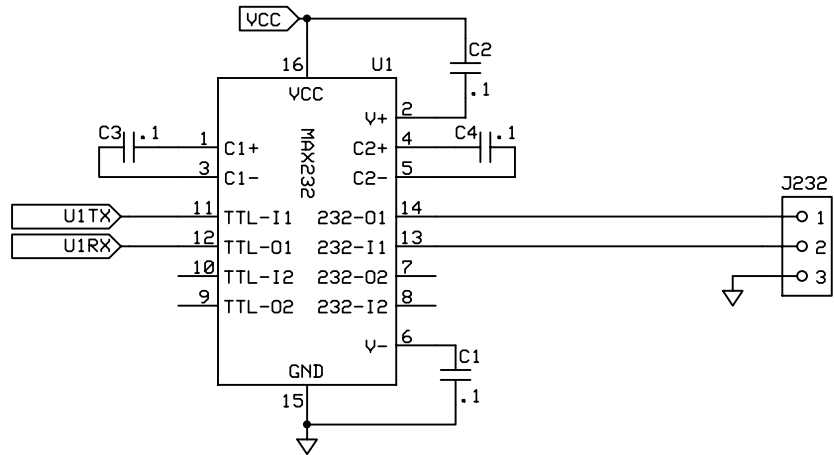
Alpha-numeric LCD interface, Unused



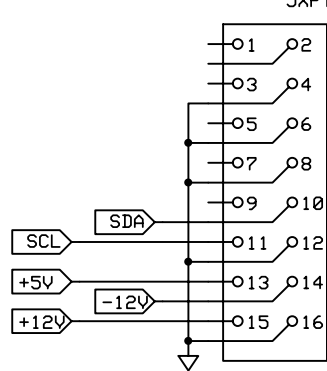
128x64 LCD Port



RS232 Debug port

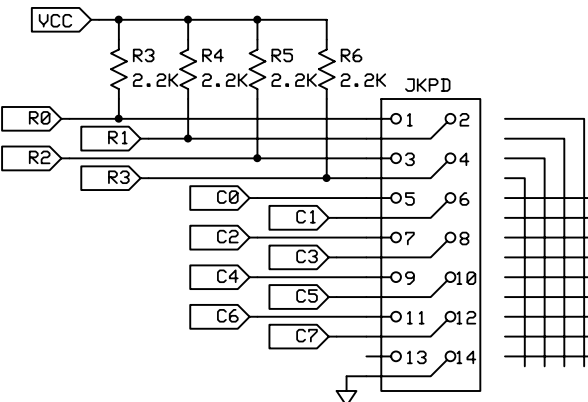
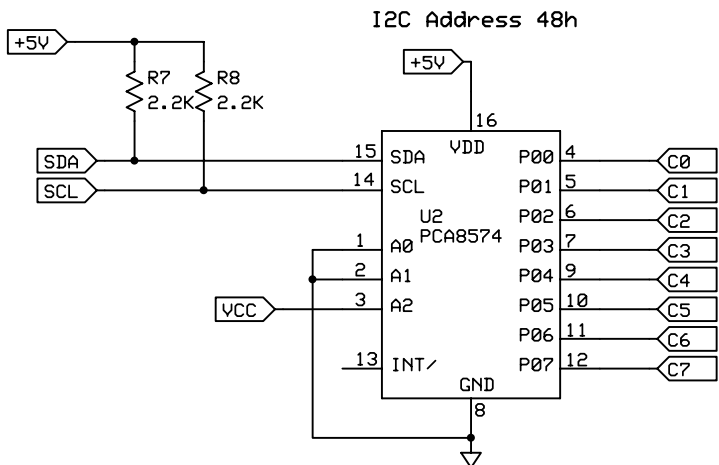


Power and I2C control to XPT

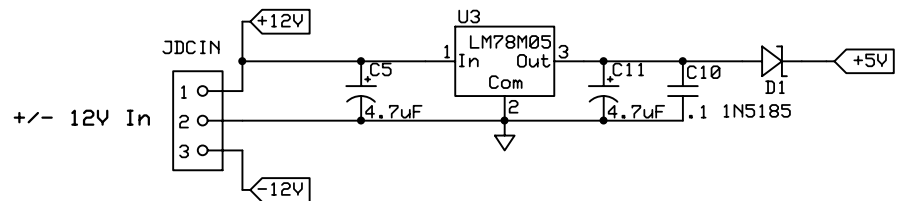


I2C Pull-up: 2.3 ma to +5V
When preamps selected: +2.3ma to +5V

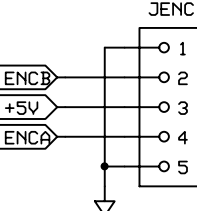
Keypad Column driver, Open Drain 100ua PU



+5V regulator



Encoder Knob



IR Remote Receiver

